



Four Pines is a Wyoming home clad in cedar and local stone

[f](#) [t](#) [p](#) [in](#) [t](#)

Jenna McKnight | 8 June 2022

2 comments

Architecture studio CLB Architects took cues from Swiss chalets and vernacular design to create a

[f](#) [t](#) [p](#) [in](#) [t](#)



*CLB Architects designed Four Pines for Teton Village*

To design the residence, local firm CLB took inspiration from Swiss mountain chalets and the vernacular architecture of the American Mountain West.

The home was designed to achieve three main goals – to make the most of the natural setting, provide ample space for visitors, and accommodate the client's impressive art collection, which features work by artists such as Richard Serra, Deborah Butterfield and Roy Lichtenstein.





Exterior walls are clad in vertical cedar siding, which is paired with local grey stone that mimics the area's rock formations. In some areas, stretches of glass are covered with wooden screens.



*In total, the home encompasses 9,090 square feet (844 square metres)*

"Large window openings are screened with wood slats to provide seclusion from the neighbours and admit filtered light into interior spaces," the team said.

Upon entering on the east, one encounters a staircase with wooden treads and glazed walls.



*The kitchen and living areas are on an open floor plan*

"The custom glass staircase creates transparency and allows the client's art to be the focal point, setting the stage for the experience of the home," the team said.

Just past the entry is the pavilion-like volume, which holds an open-plan space for cooking, dining and lounging. The western wall is a vast expanse of glass that provides views of the ski resort and surrounding mountains.



*Windows open the home to the mountains beyond*

The home's northern wing holds a generous primary suite, while the eastern portion contains two bedrooms, a guest lounge and an office. A garage and ski room are found on the south.

Upstairs, the team placed additional bedrooms, a game room and a terrace.





team said of both the exterior and interior materials.

---

**Read:**

## **CLB Architects arranges Japan-influenced Wyoming home around courtyard gardens**

The quartzite used on the facades reappears indoors, on the columns and fireplace in the public zone. Limestone tiles cover the floor in the entryway.

Additional finishes include rich-toned walnut and creamy plaster, which are meant to "engender warmth but not to compete with the art".





*The home's northern wing holds a generous primary suite,*

*The photography is by Matthew Millman (winter) and Kevin Scott (summer).*

---

### Project credits:

**Architecture:** CLB Architects

**CLB team:** Andy Ankeny (principal), John Carney (principal), Brent Sikora (project manager and coordinator)

**Interior designer:** Soucie Horner

**Contractor:** OnSite Management (Mark Pollard)

**Landscape:** Hershberger Design (Mark Hershberger)

**Civil engineer:** Nelson Engineering (Dave Dufault)

**Structural engineer:** KL+A (Rachel Harper)

**Mechanical engineer:** Melvin Engineering (John Melvin)

**Electrical engineer:** Helius Lighting Group (Paul Hixson)

**Geotechnical engineer:** Womack/Jorgenson Engineering (Ray Womack)

**Lighting:** Helius Lighting Group (Paul Hixson)

**Millwork fabrication:** Mountain High Woodworks

Read more: [Architecture](#) | [USA](#) | [Cedar](#) | [Wyoming](#) | [CLB Architects](#) | [Instagram](#)

---

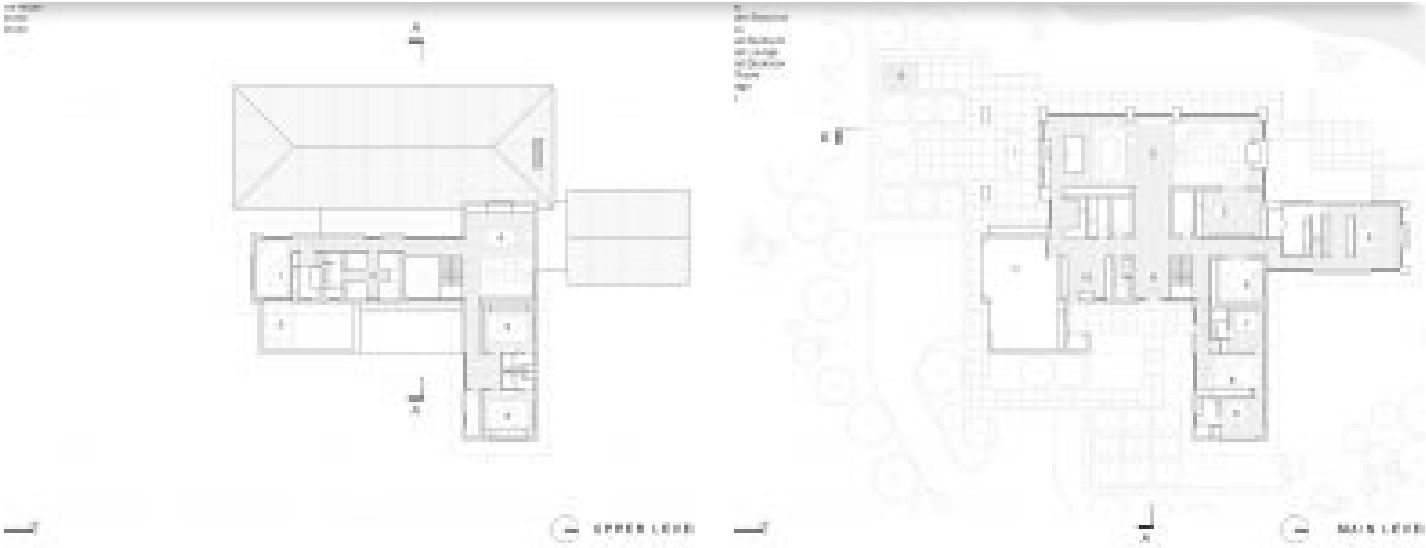
### Subscribe to our newsletters

Email\*

Next

---

### More images and plans





Share and comment



2 comments

- More
- Architecture
- Interiors
- Design
- Lookbooks

Recommended stories



DéDal Architectes creates angular brick home in Belgium



The Ranch Mine optimises Arizona home for indoor-outdoor living





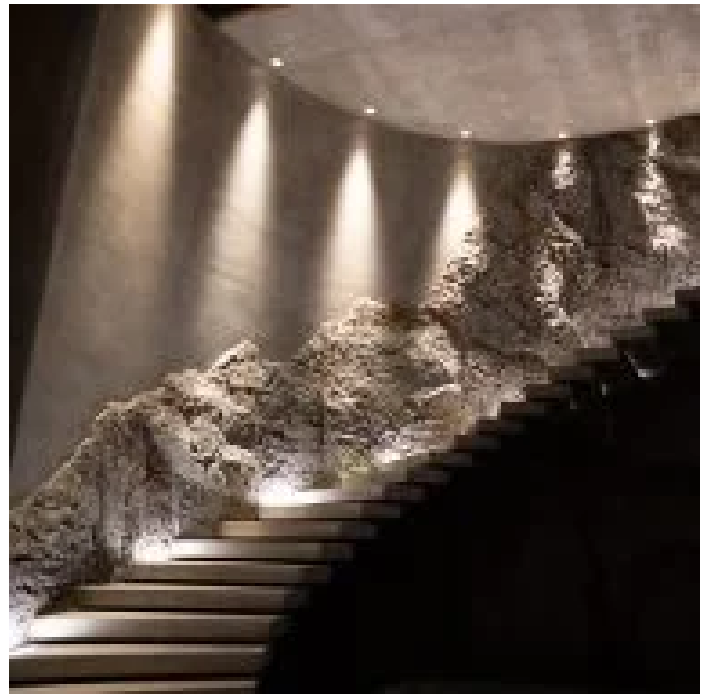
Inês Brandão Arquitectural completes Cork House in Portugal



Citic teams up with local builders for lakeside house in Chile



Annie Barrett and Hye-Young Chung create a "home within a house" in Los Angeles



Jennifer Morden creates "aspirational" mid-century house for Fresh



Samira Rathod creates House of Concrete Experiments in India



Henning Larsen constructs translucent pavilion at 3 Days of Design

## Latest from Dezeen Showroom



Plusminus lighting by Stefan Diez for Vibia

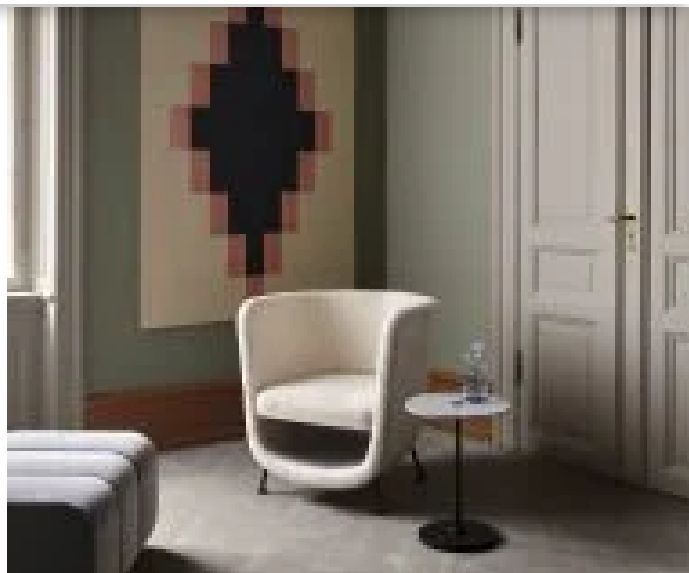


Plastic Rivers rugs by Álvaro Catalán de Ocón for Gan





RUT sofa system by Blå Station | Dezeen Showroom



Pocket chair by Stone Designs for Blå Station



Bend sofa by Stone Designs for Actiu



J39 Mogensen anniversary chair by Fredericia | Dezeen Showroom



HIMACS adds twelve new colours to Malmö surfacing collection



Whiskey Chair by House of Finn Juhl

## Comments

[Visit our comments page](#) | [Read our comments policy](#)

2 Comments

Dezeen



Login ▾

♥ Favorite

🐦 Tweet

f Share

Sort by Newest ▾

Join the discussion...

LOG IN WITH

OR SIGN UP WITH DISQUS ?

Name

**Boreal** • 9 days ago

A 9,090 square feet second home. More sprawl, not meeting a need for housing, just a need for tax deductions.

^ | ▾ • Reply • Share ▸


**apsco radiales** • 9 days ago

Lovely home.

^ | ▾ • Reply • Share ▸

---

**Most popular****Most commented**

- 1 DéDal Architectes creates angular brick home in Belgium
  - 2 MIT researchers propose using Space Bubble-shield to reflect the sun
  - 3 Jennifer Morden creates "aspirational" mid-century house for Fresh
  - 4 Henning Larsen constructs translucent pavilion at 3 Days of Design
  - 5 Marlon Blackwell's Thaden School buildings are rooted in Arkansas vernacular architecture
- 

---

**Subscribe**



our newsletters



Email

Next

## Popular jobs

## Featured jobs

- 1 Assistant professor in architecture at Heriot-Watt University
- 2 Part 2 architectural assistant at Mark Pinney Associates
- 3 Part 3 architect at Studio Verve Architects
- 4 Part 2 architectural assistant at Alex Tart Architects
- 5 Senior architectural technologist at Architype

## Highlights

Ukraine war  
damage



Lucia Eames  
exhibition



Supertall  
skyscrapers

